



PLEASANT SPRINGS SANITARY DISTRICT

2083 Williams Drive
Stoughton, WI 53589
www.pssd-wi.org

Happy New Year January 2021

Phone: (608)873-3074
Fax: (608) 646-0089
Email: info@pssd-wi.org

What You Shouldn't Flush or Pour Down The Drain!

2020 has been a challenging year for many of us and our staff has worked hard to maintain the sanitary district and resolve emergencies. Please help keep our technicians safe by giving them clear and appropriate space to work. We want them to remain safe and healthy to serve you! We ask all residents of the District to please only flush **human waste and toilet paper** down your toilet. Our technicians continue to find wipes, rags, hygiene applicators and even underwear in the sanitary lift pumps. All these clog damage the pumps and increase costs for the district. Products labeled **flushable** and **biodegradable** need to go in your trash—not your toilet. These are a few of the products that damage the sanitary district pumps:



Wad of rags pulled from
a Lift Station Pump



- Rags or Cloths—Socks
- Personal wipes (marked flushable)
- Sanitary Napkins or Tampons and their applicators
- Sand/gravel-Aquarium stone
- Glass
- Coffee Grounds
- Kitty Litter
- Disposable Diapers
- Condoms
- Batteries
- Metal
- Grease



It is illegal to dispose of paint, motor oil, fuels, medicine, drugs, or other toxic materials in your toilets or drains. The Dane County Clean Sweep Program provides information for disposal of toxic refuse. Visit their website www.danecountycleansweep.com or call (608)838-9555.

Get Involved with Your Community

The Pleasant Springs Sanitary District has a commissioner term currently available. The Sanitary District Commission is responsible for administration, finances, ordinances, and policies governing the Sanitary District.

The Sanitary District Commission meets on the second Tuesday each month at 5:30 p.m. If interested, please send a written statement of interest and specific qualifications for serving to:

Pleasant Springs Town Board-PSSD Appointment
2354 County Highway N
Stoughton, WI 53589

If you have any questions, please contact the Clerk at 608-873-3063 or email at clerktreasurer@pleasantsprings.org.

Commissioner
Vacancy

Join Our Team!

We are looking for a Secondary On-Call person to join our on-call rotation. The on-call person provides immediate response to the Primary On-Call Technician in emergency situations for night and weekend shifts. On-Call hours are after 4:00 p.m. on weekdays and all hours on weekends. Requirements for this position include:

- Basic mechanical aptitude and familiarity with hand and power tools.
- Knowledge and experience with pumps and electrical controls helpful.
- A driver's license and good driving record.

Background checks will be conducted. Applicant must live within 30 minutes of the district office.

Secondary On-call compensation is \$160.00 per week.

Please contact our District Manager, Rich at richard.everson@pssd-wi.org or 873-3074 to ask questions or apply for the position.



Commissioners

Linda Larsson, President
John Barry, Secretary
Susan Luellwitz, Commissioner
David Pfeiffer, Appointed Treasurer

Office Hours

Mondays 1:00-4:00 p.m.
Tuesdays 8:00 a.m.-2:00 p.m.
Thursdays 1:00-4:00 p.m.

Service Technicians are on duty Monday-Friday 7:00 a.m.-noon and 12:30-3:30 p.m. In the winter months the technicians are not on duty on Fridays.

The Commission holds their regular monthly meeting the second Tuesday of each month. Public comments/concerns are always welcome. Agendas are posted at the PSSD administration office and on the District's website at www.pssd-wi.org.

A Few Reminders...

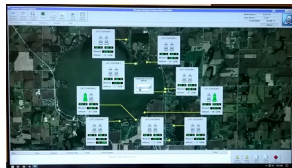
- If you see water pooling in your yard, this is not normal. Please contact the District immediately!
- Sump Pumps **are not permitted** to be connected to the sewer system. Clearwater must be pumped out into your yard.
- Snowbirds, please contact the office and let Cindy know when you will be at your winter address. We use bulk mailing services, and knowing your winter address will insure you receive your bill in a timely manner.
- Please be sure to keep snow and ice off the top of your control box so others can see the alarm light. The service technicians need to be able to see if the red light is on as well as your neighbors if you are not home.

Thank you for your cooperation!



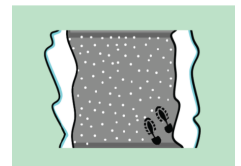
SCADA/Lift Station Electrical Upgrades Complete

During the summer/fall of 2020, the District's new SCADA system was installed and electrical upgrades completed at all nine lift stations! SCADA stands for supervisory control and data acquisition. It is a computer program that gathers and analyzes data real time. The SCADA system also calls our service technicians when a lift station goes into alarm. The staff are utilizing the new system improvements which provides increased efficiencies. The District has begun purchasing new lift station pumps. Many of the lift station pumps are 30 years old.



Avoid Overuse of Salt Products

Madison Metropolitan Sewerage District has asked us to be mindful of how much salt we apply to our driveways and sidewalks. Remember to "Shovel, Scatter, Switch," or in other words, remove the snow first, use the correct tools, prevent compaction, understand the size of the area you're working with and most importantly, use the correct amount of salt! A coffee cup size container filled with salt is sufficient to salt a sidewalk 60-70 feet long. Remember at temperatures below 15 degrees, salt becomes less effective. Switch to sand for better traction!



Automatic Payment Information

Electronic Payments: PSSD has made paying your quarterly user charge simple, fast, and worry-free. Our auto pay option will simplify your quarterly bill paying and remove one task from your to-do list. Simply sign up and your user charge will be automatically deducted from your checking account on the due date. You already know how much your bill will be; together we can make sure your bill will be paid on time. Sign up today! Use the form below and don't forget to enclose a voided check.

Paperless Billing: Say goodbye to paper with paperless billing. Save paper, save a tree, and save money by helping to reduce operating costs. We have the capability to e-mail your quarterly user invoices and monthly statements.

Enrolling is easy: Please detach and return the form below along with your current payment.

Automatic Bill Payment and/or Electronic Invoicing Enrollment Form

If not returning enrollment form with a check payment, please include a voided check.
Please check the appropriate box below...

_____ New Signup

_____ Change Banking Information

_____ Please begin sending invoices electronically to _____
Enter email address here

All information is required to process this application.

Name on Account	
Mailing Address	
City, State, Zip	
Signature	Date

PSSD Account No.	
Daytime Phone No.	
Bank Routing No.	
Bank Account No.	<input type="checkbox"/> Checking <input type="checkbox"/> Savings

Transfers refused because of insufficient funds or a closed account will incur a service charge of \$10.